

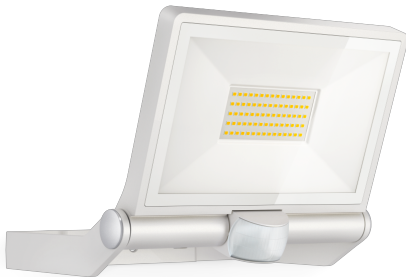
Sensor-switched LED floodlight

XLED ONE XL Sensor

white

EAN 4007841 065270

Article number 065270



LED

long life LED
50.000 h

3000 K

3000K
warm-white



infrared sensor
180°



max. 12 m



IP44



Sensor 180°
vertical



Panel 180° vertical



2 - 2000 lux



8 sec - 35 min



indoor/outdoor
light

Function description

Powerful illumination. Effective protection. The XLED ONE XL Sensor wall and ceiling spot can be tilted through 180° and illuminates its surroundings with day-bright light. In numbers: 3000 K and 4400 lm from 43,5 W. With infrared sensor, 180° angle of coverage, 12 m reach, twilight setting (2-2000 lux) as well as time setting (8 s to 35 min). Protection class: IP44.

Technical specifications

| | |
|---|------------------------------|
| Dimensions (L x W x H) | 222 x 259 x 215 mm |
| Mains power supply | 230 – 240 V / 50 – 60 Hz |
| Mounting height max. | 3,00 m |
| Sensor Technology | passive infrared |
| Output | 43,5 W |
| Interconnection | No |
| Luminous flux | 4400 lm |
| Colour temperature | 3000 K |
| Colour variation LED | SDCM3 |
| Colour Rendering Index | 80-89 |
| With lamp | Yes, STEINEL LED system |
| Lamp | LED cannot be replaced |
| LED life expectancy (max. °C) | 50000 h |
| Drop in luminous flux in accordance with LM80 | L70B10 |
| LED cooling system | Passive Thermo Control |
| With motion detector | Yes |
| Detection angle | 180 ° |
| Sneak-by guard | No |
| Capability of masking out individual segments | Yes |
| Reach, radial | r = 3 m (14 m ²) |

| | |
|----------------------------|--------------------------------|
| Reach, tangential | r = 12 m (226 m ²) |
| Photo-cell controller | Yes |
| Twilight setting | 2 – 2000 lx |
| Time setting | 8 s – 35 Min. |
| Basic light level function | No |
| Main light adjustable | No |
| Settings via | Potentiometers |
| Soft light start | No |
| Impact resistance | IK03 |
| IP-rating | IP44 |
| Protection class | I |
| Ambient temperature | -20 – 40 °C |
| Housing material | Aluminium |
| Cover material | Glass transparent |
| Manufacturer's Warranty | 3 years |
| Includes corner wall mount | No |
| PU1, net weight | 1,396 kg |
| Version | white |
| PU1, EAN | 4007841065270 |

<https://www.steinell.de>

Subject to technical modifications

10.2021 Page 1 from 2

Sensor-switched LED floodlight

XLED ONE XL Sensor

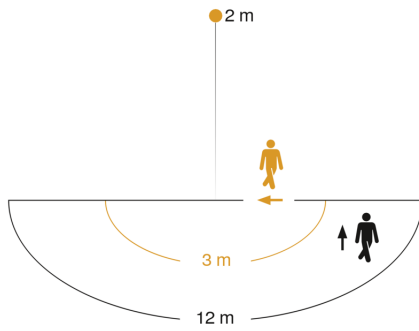
white

EAN 4007841 065270

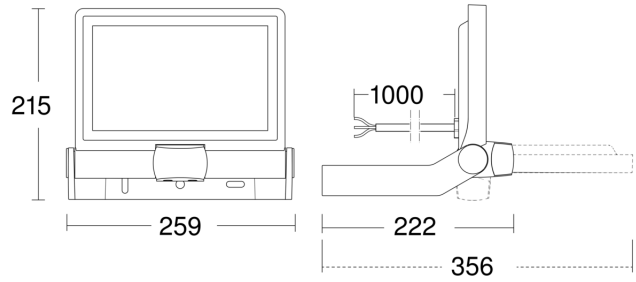
Article number 065270



Detection Zone



Dimension Drawing



Mögliche Montagehöhe: 1,80 m – 3,00 m

Orange: radial

Schwarz: tangential