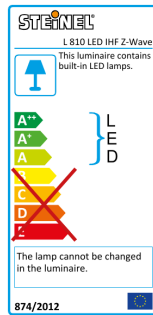
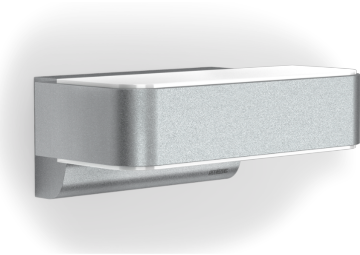


Sensor-switched outdoor light

L 810 LED iHF Z-Wave

Silver

EAN 4007841 029869



Up-/Downlight

LED

30 years (Ø 4,5h / day)



3000K warm-white



intelligent high frequency sensor 160°



1 - 5 m



IP44



2 - 1000 lux



5 sec - 15 min



soft light start



manual override

Function description

The most modern outdoor light in the world. Designer sensor-switched outdoor light L 810 LED iHF Z-Wave, can be integrated into the Smart Friends system or any other Z-Wave network, with invisible high-frequency sensor, ideal for building entrances and fronts of buildings, 12,5 W STEINEL LED lighting system, 612 lm, 160° coverage angle, reach from 1 - 5 m, for stylish up and downlighting, includes soft light start and optional manual override for 4 hours.

Sensor-switched outdoor light

L 810 LED iHF Z-Wave

Silver

EAN 4007841 029869



Technical specifications

Dimensions (L x W x H)	146 x 230 x 91 mm	Electronic scalability	Yes
Mains power supply	230 – 240 V / 50 Hz	Mechanical scalability	No
Mounting height max.	2,50 m	Reach, radial	r = 5 m (35 m ²)
Sensor Technology	iHF (intelligent high-frequency technology)	Reach, tangential	r = 5 m (35 m ²)
Transmitter power	< 1 mW	Photo-cell controller	Yes
Output	12,5 W	Twilight setting	2 – 2000 lx
Interconnection	Yes	Time setting	5 s – 15 Min.
Type of interconnection	Master/slave	Basic light level function	Yes
Slave mode/selectable	Yes	Basic light level function time	10/30 min, all night
Luminous flux	612 lm	Main light adjustable	50 - 100 %
Efficiency	49 lm/W	Soft light start	Yes
Colour temperature	3000 K	Continuous light	selectable, 4h
Colour variation LED	SDCM3	Impact resistance	IK03
Colour Rendering Index CRI	80-89	IP-rating	IP44
With lamp	Yes, STEINEL LED system	Protection class	II
Lamp	LED cannot be replaced	Ambient temperature	-20 – 50 °C
LED life expectancy (max. °C)	50000 h	Transmitter range	Up to 100 m in the open, 30 m indoors
Drop in luminous flux in accordance with LM80	L70B10	Housing material	Aluminium
Base	without	Cover material	Plastic, opal
LED cooling system	Active and Passive Thermo Control	Manufacturer's Warranty	3 years
With motion detector	Yes	Settings via	Potentiometers, Z-Wave
Detection angle	160 °	Version	Silver
Sneak-by guard	Yes	PU1, EAN	4007841029869
Capability of masking out individual segments	No		

Accessories

EAN 4007841 029876 Smartfriends Box

Sensor-switched outdoor light

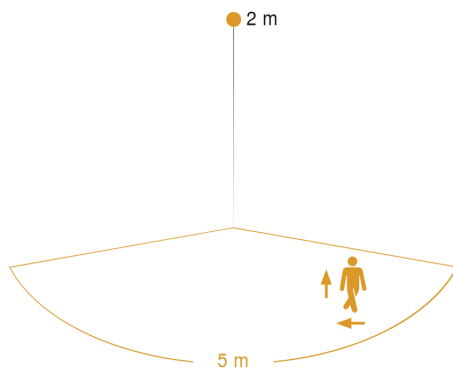
L 810 LED iHF Z-Wave

Silver

EAN 4007841 029869



Detection Zone



Mögliche Montagehöhe: 1,80 m – 2,50 m
Orange: radial und tangential

Dimension Drawing

