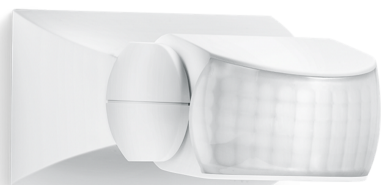


## Motion detector

# IS 1

white  
EAN 4007841 600310  
Article number 600310



3 years

manufacturer's  
warranty steinel.de/  
garantie

## Function description

Targeted detection and attractive price. Infrared motion detector IS 1, for indoors and out, ideal for targeted coverage of small areas, 120° angle of coverage, reach up to 10 m, selectable time and twilight threshold, sensor turns through 30° and tilts through 180° for exact adjustment of the detection zone.

## Technical specifications

Dimensions (L x W x H)	120 x 80 x 50 mm
Manufacturer's Warranty	3 years
Settings via	Potentiometers
With remote control	No
Version	white
PU1, EAN	4007841600310
Type	Motion detectors
Application, place	Indoors, Outdoors
Application, room	outdoors, front door, all round the building, terrace / balcony, courtyard & driveway
Colour	white
Colour, RAL	9001
Includes corner wall mount	No
Installation site	wall, ceiling
Installation	Surface wiring, Wall, Ceiling
IP-rating	IP54
Protection class	II

LED lamps > 2 W < 8 W	125 W
LED lamps > 8 W	250 W
Capacitive load in µF	88 µF
Technology, sensors	passive infrared, Light sensor
Mounting height	1,80 – 3,00 m
Mounting height max.	3,00 m
Optimum mounting height	2 m
Detection angle	120 °
Angle of aperture	40 °
Sneak-by guard	No
Capability of masking out individual segments	Yes
Electronic scalability	No
Mechanical scalability	No
Reach, radial	r = 3 m (9 m <sup>2</sup> )
Reach, tangential	r = 10 m (105 m <sup>2</sup> )
Switching zones	260 switching zones

<https://www.steinel.de>

Subject to technical modifications

01.2025 Page 1 from 3

# IS 1

white  
EAN 4007841 600310  
Article number 600310

## Technical specifications

Ambient temperature	from -20 up to 50 °C
Material	Plastic
Mains power supply	230 – 240 V / 50 Hz
Switching output 1, resistive	500 W
Fluorescent lamps, electronic ballast	250 W
Fluorescent lamps, uncorrected	500 VA
Fluorescent lamps, series-corrected	500 VA
Fluorescent lamps, parallel-corrected	500 VA
Switching output 1, low-voltage halogen lamps	500 VA
LED lamps < 2 W	100 W

Twilight setting	2 – 2000 lx
Time setting	8 s – 35 Min.
Basic light level function	No
Main light adjustable	No
Twilight setting TEACH	No
Constant-lighting control	No
Interconnection	Yes
Type of interconnection	Master/master
Interconnection via	Cable
Product category	Motion detector

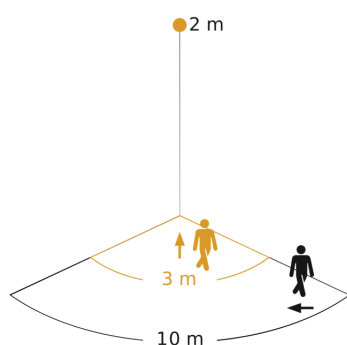
# IS 1

white

EAN 4007841 600310

Article number 600310

## Detection Zone

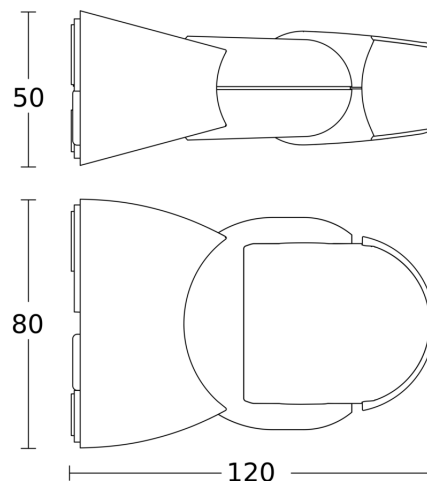


Possible mounting height: 1,80 m - 3,00 m

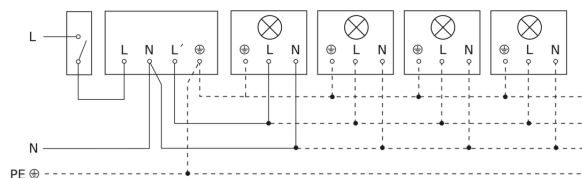
Orange: radial

Black: tangential

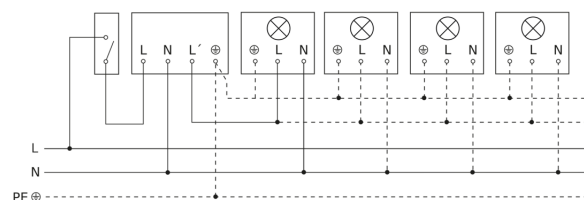
## Dimension Drawing



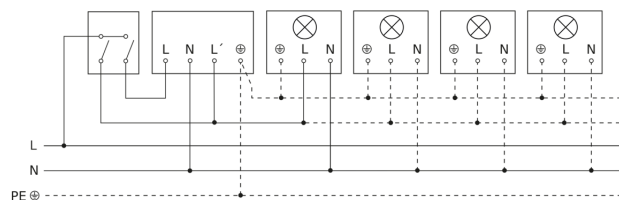
## Light without neutral conductor



## Light with neutral conductor



## Connection using two-circuit switch for manual and automatic operation



## Connection of 4-fold push-button coupler to DALI2 APC

