

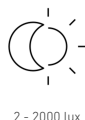
## Motion detector

# IS 140-2

black

EAN 4007841 608811

Article number 608811



manufacturer's  
warranty steinel.de/  
garantie

## Function description

The classic detector, now with even more class. Infrared motion detector IS 140-2, for indoors and out, ideal for targeted detection close to the building, 140° angle of coverage, reach up to 14 m, selectable time and twilight threshold, sensor turns through 180° and tilts through 90° for exact adjustment of the detection zone.

## Technical specifications

|                            |   |
|----------------------------|---|
| Dimensions (L x W x H)     | 99 x 86 x 82 mm   |
| Manufacturer's Warranty    | 3 years   |
| Settings via               | Potentiometers  |
| With remote control        | No  |
| Version                    | black   |
| PU1, EAN                   | 4007841608811   |
| Type                       | Motion detectors  |
| Application, place         | Outdoors, Indoors   |
| Application, room          | outdoors, front door, all round the building, terrace / balcony, courtyard & driveway |
| Colour                     | black   |
| Colour, RAL                | 9005  |
| Includes corner wall mount | No  |
| Installation site          | wall, corner  |
| Installation               | Surface wiring, Wall  |
| IP-rating                  | IP54  |
| Protection class           | II  |

|   |                                |
|---|--------------------------------|
| LED lamps > 2 W < 8 W                         | 125 W                          |
| LED lamps > 8 W                               | 250 W                          |
| Capacitive load in µF                         | 88 µF                          |
| Technology, sensors                           | passive infrared, Light sensor |
| Mounting height                               | 1,80 – 3,00 m                  |
| Mounting height max.                          | 3,00 m                         |
| Optimum mounting height                       | 2 m                            |
| Detection angle                               | 140 °                          |
| Angle of aperture                             | 40 °                           |
| Sneak-by guard                                | Yes                            |
| Capability of masking out individual segments | Yes                            |
| Electronic scalability                        | No                             |
| Mechanical scalability                        | No                             |
| Reach, radial                                 | r = 3 m (11 m <sup>2</sup> )   |
| Reach, tangential                             | r = 14 m (239 m <sup>2</sup> ) |
| Switching zones                               | 144 switching zones            |

<https://www.steinel.de>

Subject to technical modifications

04.2025 Page 1 from 3

Motion detector

# IS 140-2

black  
EAN 4007841 608811  
Article number 608811



## Technical specifications

|   |                      |
|---|----------------------|
| Ambient temperature                           | from -20 up to 50 °C |
| Material                                      | Plastic              |
| Mains power supply                            | 230 – 240 V / 50 Hz  |
| Switching output 1, resistive                 | 1000 W               |
| Fluorescent lamps, electronic ballast         | 250 W                |
| Fluorescent lamps, uncorrected                | 500 VA               |
| Fluorescent lamps, series-corrected           | 500 VA               |
| Fluorescent lamps, parallel-corrected         | 500 VA               |
| Switching output 1, low-voltage halogen lamps | 1000 VA              |
| LED lamps < 2 W                               | 100 W                |

|                            |                 |
|----------------------------|-----------------|
| Twilight setting           | 2 – 2000 lx     |
| Time setting               | 8 s – 35 Min.   |
| Basic light level function | No              |
| Main light adjustable      | No              |
| Twilight setting TEACH     | No              |
| Constant-lighting control  | No              |
| Interconnection            | Yes             |
| Type of interconnection    | Master/master   |
| Interconnection via        | Cable           |
| Product category           | Motion detector |

## Accessories

|                    |                      |
|--------------------|----------------------|
| EAN 4007841 631864 | Corner wall mount 07 |
| EAN 4007841 631765 | Corner wall mount 07 |

## Motion detector

# IS 140-2

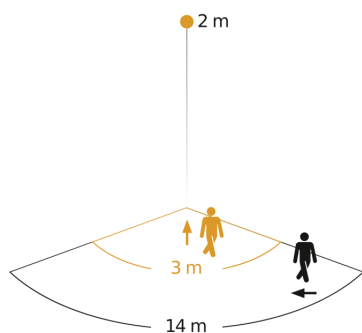
black

EAN 4007841 608811

Article number 608811



## Detection Zone

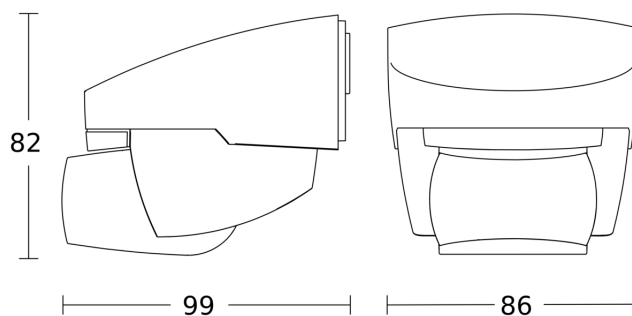


Possible mounting height: 1,80 m - 3,00 m

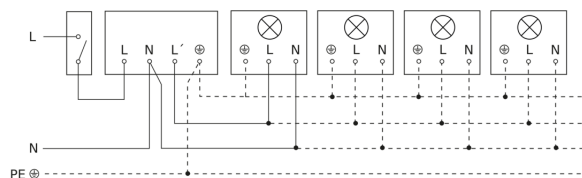
Orange: radial

Black: tangential

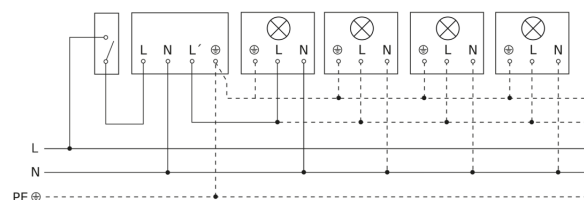
## Dimension Drawing



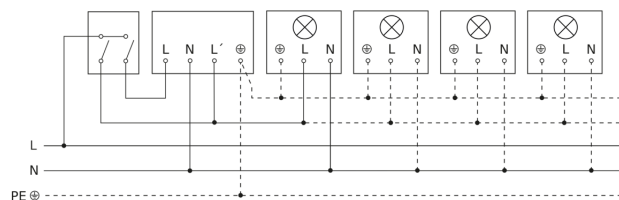
## Light without neutral conductor



## Light with neutral conductor



## Connection using two-circuit switch for manual and automatic operation



## Circuit diagram Connection via a changeover switch for continuous and automatic operation

