


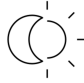






sensIQ

EVO white
 EAN 4007841 029562
 Article number 029562



		2500 W						5 years	
<small>infrared sensor 3 x 100°</small>	<small>3 zones scalable 2-20m</small>	<small>2500 W max.</small>	<small>IP54</small>	<small>2 - 2000 lux</small>	<small>5 sec - 15 min</small>	<small>ideal 2 - 5 m</small>	<small>energy saving</small>	<small>manufacturer's warranty steinel.de/ garantie</small>	<small>CE</small>

Function description

King of the infrared motion detectors. The revolutionary sensIQ for indoors and out, ideal for building entrances, loading bays, installation height up to 5 m, quadruple sensor system for optimum coverage over a 300° detection angle, 20 m range (tangential), metre-precision reach setting in 3 different directions, heavy-duty relay for high switching capacity. Remote control and corner wall mount bracket included.

Technical specifications

Dimensions (L x W x H)	172 x 113 x 144 mm	LED lamps > 2 W < 8 W	250 W
With motion detector	Yes	LED lamps > 8 W	500 W
Manufacturer's Warranty	5 years	Capacitive load in µF	176 µF
Settings via	Remote control, Potentiometers, Smart Remote	Technology, sensors	passive infrared, Light sensor
With remote control	Yes	Mounting height	2,00 – 5,00 m
Version	white	Mounting height max.	5,00 m
PU1, EAN	4007841029562	Optimum mounting height	2 m
Type	Motion detectors	Detection angle	300 °
Application, place	Indoors, Outdoors	Angle of aperture	180 °
Application, room	multi-storey / underground car park, outdoors, warehouse, front door, all round the building, courtyard & driveway, Indoors	Sneak-by guard	Yes
Colour	white	Capability of masking out individual segments	Yes
Colour, RAL	9010	Electronic scalability	No
Includes corner wall mount	Yes	Mechanical scalability	Yes
Installation site	wall, ceiling, corner	Reach, radial	r = 4 m (42 m ²)
		Reach, tangential	r = 20 m (1047 m ²)
		Switching zones	1360 switching zones

sensIQ

EVO white
 EAN 4007841 029562
 Article number 029562



Technical specifications

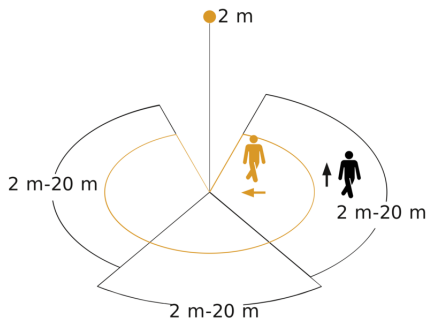
Package content	1
Installation	Surface wiring, Wall, Ceiling, corner
IP-rating	IP54
Ambient temperature	from -20 up to 50 °C
Material	Plastic
Mains power supply	220 – 240 V / 50 – 60 Hz
Switching output 1, resistive	2500 W
Switching output 1, number of LEDs / fluorescent lamps	8 pcs.
Switching output 1, floating	No
Fluorescent lamps, electronic ballast	500 W
Fluorescent lamps, series-corrected	1800 W
Fluorescent lamps, parallel-corrected	500 VA
LED lamps < 2 W	100 W

Functions	Normal / test mode, Manual ON / ON-OFF
Twilight setting	2 – 2000 lx
Time setting	5 s – 15 Min.
Basic light level function	No
Main light adjustable	No
Twilight setting TEACH	Yes
Constant-lighting control	No
Interconnection	Yes
Type of interconnection	Master/master
Interconnection via	Cable
Product category	Motion detector

Accessories

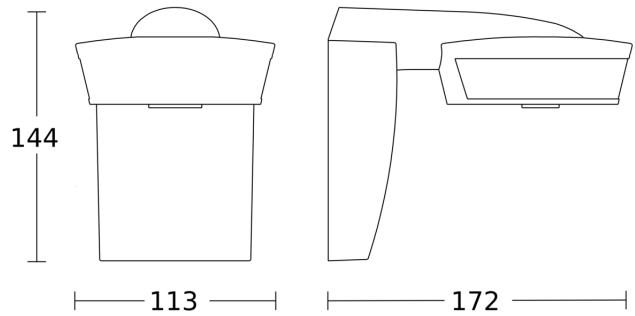
EAN 4007841 009151	Remote control Smart Remote
EAN 4007841 007638	Remote control RC9

Detection Zone

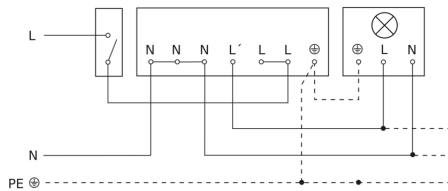


Possible mounting height: 2,00 m - 5,00 m
 Orange: radial
 Black: tangential
 3 scalable zones

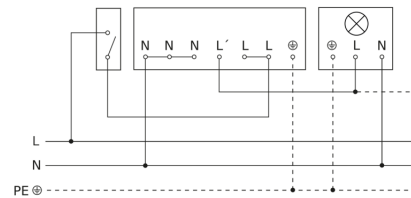
Dimension Drawing



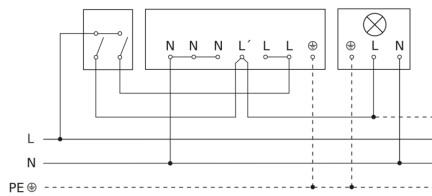
Light without neutral conductor



Light with neutral conductor



Connection using two-circuit switch for manual and automatic operation



Connection of 4-fold push-button coupler to DALI2 APC

