



# STEINEL CONNECT APP

How to set up the STEINEL products on the basis of the new mesh standard.



## Brief explanation of important terms

### What is a Bluetooth network?

Steinel products can be added to Bluetooth networks. A network can consist of multiple (up to 100) Steinel products. Networks are spatially connected. Products communicate with each other within a network (e.g. on the floor of a building), but NOT between different networks. For very extensive installations, it is advisable to set up multiple independent networks.

### What are groups?

Products can be allocated to groups within a network. All products that belong to such a group are linked to each other and behave absolutely identical. Only the detection range can be set individually for each product.

### What is a mesh network?

A mesh network is a local Wi-Fi network with several Bluetooth products. The products are connected to each other and can also be controlled together. Each component boosts the transfer signal, thereby contributing to greater wireless coverage.

Questions? Our technical customer support service is happy to help: [objekte@steinel.de](mailto:objekte@steinel.de)

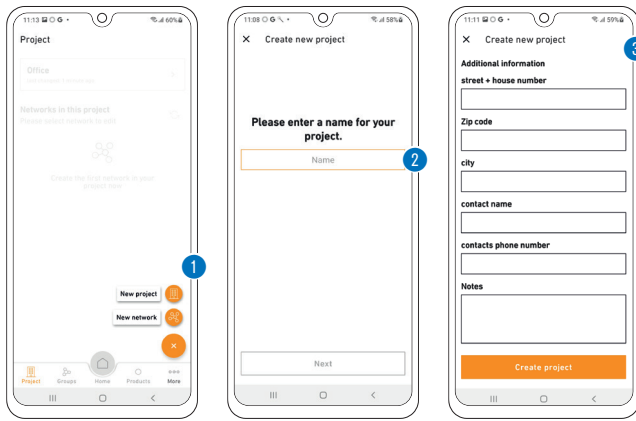
Phone: +49 (0) 5245 / 448 - 307

Phone: +49 (0) 5245 / 448 - 385

## The fastest way to smart lighting

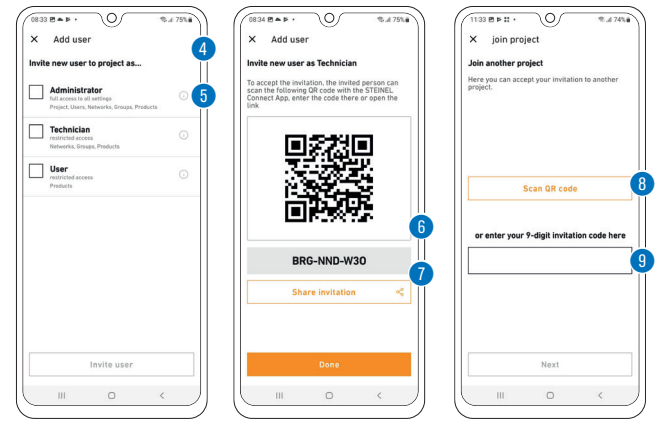
1. Create project
2. Add users to the project
3. Set up network and add products
4. Allocate products to groups
5. Group settings
6. Configure neighbouring groups

## 1. Create project



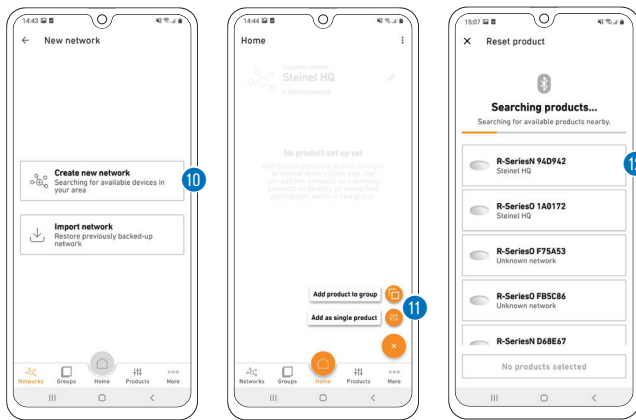
- First, create a new project by tapping the plus symbol. 1
- Next, enter a name for the project. 2
- Enter all the necessary project details to provide other participants with as much information as possible. 3

## 2. Add users to the project (optional)



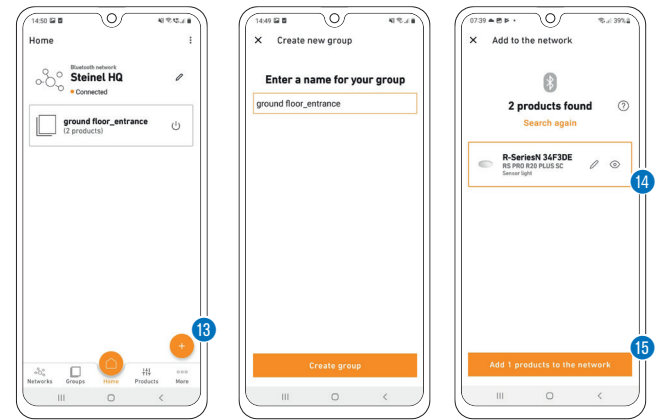
- Participants can be added to every project. There are three different roles that can be assigned to participants (administrator, installer or user). 4
- Each role has different authorisations. 5
- To add someone to a project, you can share a QR code 6, a text code, or an email invitation. 7
- Participants can take part in a project via "Join project", using a QR code 8 or text code 9.

## 3. Set up network (Add products)



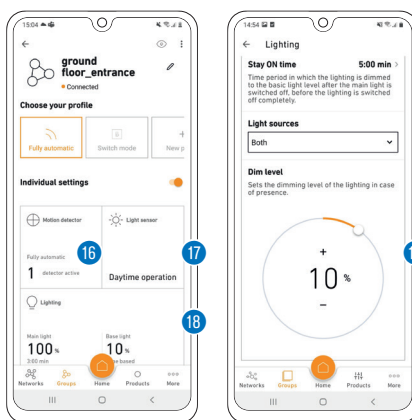
- First of all, set up a new Bluetooth network. 10
- You can either allocate each product directly to a group or configure it as an individual product. 11
- Add all STEINEL products that are to be part of this network (maximum 100 products per network). 12
- Use the search to see all products within reach that can be added to the network. 12
- Give each added product a unique name (e.g. GF\_Entrance\_L1) straight away by tapping the pencil symbol. 12
- You can identify products by making them flash using the eye symbol. 12
- **Note:** When commissioning additional products, all previously connected products must remain connected to the power supply!

## 4. Allocate products to groups



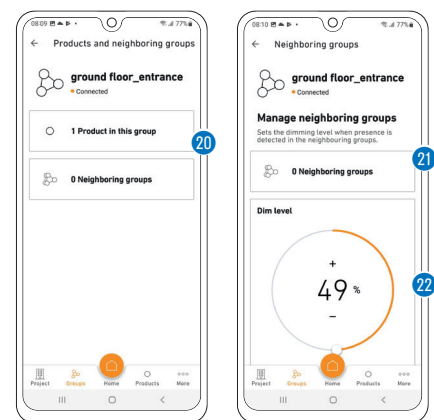
- You can also add products that were not allocated directly to a group during the setting up of the network to a group later.
- Please note that products must be part of the network in order to be allocated to a group.
- You can create new groups using the plus symbol in the "Groups" tab. 13
- Select the products 14 you wish to add to the group 15.
- The products can be configured after they have been allocated to a group or defined as an individual product.
- **Note:** A group may consist of multiple products, or just a single product.

## 5. Group settings



- Now configure the Bluetooth system by setting the brightness 17, duration 18 and dimming level 19, etc. Click on the tile (16/17/18) to go to the settings 19
- Please note that the settings always apply to the entire group. Only the sensor range 16 can be configured individually for each product.
- To measure the ambient brightness, choose one product per group as the reference value provider via the light sensor tile 17.

## 6. Configure neighbouring groups



- You can allocate neighbouring groups to previously set up groups. 20 & 21
- When the lights in a group that has been set up are switched on, the lights in the neighbouring group will also come on at the same time.
- The dimming level 22 of the neighbouring group can be set individually, as well as the lighting type (backlight, dimming level), provided the product is equipped with these features.
- **Note:** Neighbouring groups are set up from the group you desire a neighbour for – i.e. if you select Group 2 as a neighbouring group in the settings for Group 1, Group 1 will switch on when movement is detected in Group 2. For two-way connection, the neighbouring group function must be set up in both groups.

We hope you enjoy the activation of your STEINEL products!