

SENSOTEC Sensor NET Casambi

110102853	SENSOTEC Sensor HF2 NET
110102846	SENSOTEC Sensor HB PIR 3360 NET Intra
110102847	SENSOTEC Sensor HB PIR 3360 NET Wire
110102848	SENSOTEC Sensor HB PIR 3360 NET Zhaga
110102850	SENSOTEC Sensor HB PIR 345 NET Intra
110102851	SENSOTEC Sensor HB PIR 345 NET Wire
110102852	SENSOTEC Sensor HB PIR 345 NET Zhaga

CASAMBI



HF2 NET



The HF2 NET is a high-frequency sensor module designed for built-in applications. Detection takes place through glass and non-metallic materials so that the modules can be used inside luminaires or other applications without any problems.

HB PIR 3360 NET



A head for heights. Powerful reach. Reliable. Ideal for high ceilings in industrial buildings or commercial properties. For mounting heights of up to 14m. High-precision 360° infrared sensor. Maximum detection range diameter 36m. For watching over up to 1000sqm.

HB PIR 345 NET



Surveillance at the highest level. Infrared motion detector for indoors. Ideal for a rectangular detection in large heights in depots, high-bay warehouses, machine shops, check-in areas and departure lounges, installation height from 4m up to 14m, detection zone 30 x 4m (radial movements).

Connection variants

Intra



Zhaga



Wire



SENSOTEC NET CASAMBI product family

Easy to install, ready for networking via Casambi - The innovative NET sensors network wirelessly via a Casambi network, can be configured via app and control LED drivers via the DALI bus. Simple, flexible, quick to install.

The NET product family includes the HF2, PIR, Extension, HB PIR 3360 and HB PIR 345 NET sensors.

Advantages

- Sensor with integrated DALI-2 application controller
- Direct connection to a DALI interface
- Straightforward wiring, powered via the DALI bus
- Mesh network in accordance with the Casambi specification for networking and integrating sensors and luminaires
- Parameterization and configuration via Casambi app
- Wireless firmware update of the entire network
- Constant-lighting control
- Predefined Scenes
- Any selectable main and basic light level
- User-defined lighting groups with configurable behavior

Further information on the individual sensors

HF2 NET	3
Sensor technical specifications.....	3
Dimensional drawings	4
Sensor detection zones	4
Installation advice HF2 NET.....	4
HB PIR 3360 NET Intra, Wire, Zhaga	5
Sensor technical specifications.....	5
Dimensional drawings	5
Sensor detection zones	6
Installation advice HB PIR 3360 NET.....	7
HB PIR 345 NET Intra, Wire, Zhaga	7
Sensor technical specifications.....	7
Dimensional drawings	8
Sensor detection zones	9
Installation advice HB PIR 345 NET	9
General information	10
Circuit diagram	10
General installation advantages.....	10
Bluetooth antenna locations.....	10
Safety precautions	10
Operation and configuration.....	10
Additional product information.....	11
Conformity / marks of conformity	11
Note.....	11

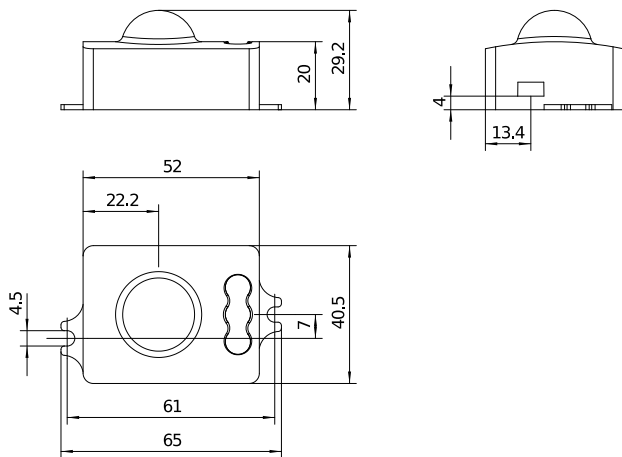
HF2 NET

Sensor technical specifications

	HF2 NET
Article number	110102853
Bluetooth Device Name	STE HF2 NET
Type	9017
Dimensions	52 × 40.5 × 29.2mm Hole spacing 61mm 3D data available online
Features	Motion detector Light sensor Feedback indicator Casambi Evolution
Sensor technology	High-frequency technology
Transmitter power	1 - 2mW
Transmission frequency	5.8GHz
Light measurement range	4 - 1000lx
Angle of coverage	360° with 160° angle of aperture
Mounting height	2.5 - 3.5m
Optimum mounting height	2.8m
Reach, radial	Ø 8m (50m ²)
Reach, tangential	Ø 8m (50m ²)
Connection	0.34 - 0.75mm ²
Supply voltage / current consumption	12 - 22.5VDC / max. 46mA
IP rating:	IP20
Temperature range	-20 bis +60°C (tc +60°C)
Bluetooth Range	15m
Interfaces	Dali, Casambi
Approval marks / Conformity	CE
Standards	EN 61347-1 EN 61347-2-11 EN 55015 EN 61547 EN 301 489-1 EN 300 440

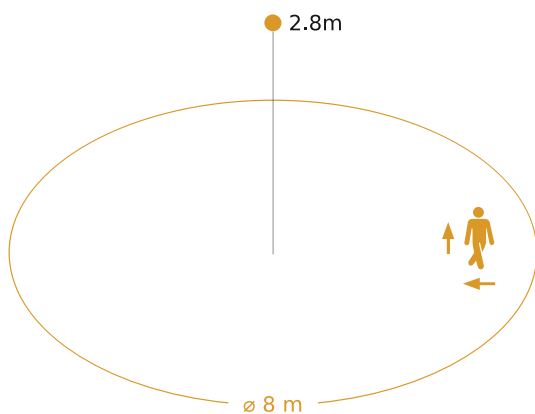
Dimensional drawings

HF2 NET



Sensor detection zones

HF2 NET



Possible mounting height 2.5m - 3.5m
 Orange: radial and tangential

Installation advice HF2 NET

- The sensor is intended to be used indoors only.
- Metallic Materials may influence the performance of the Bluetooth functionality.
- Design-in support from STEINEL specialists.
- It is highly recommended not to place the sensor in the immediate vicinity of radio transmitters and moving objects (i.e. WLAN routers).

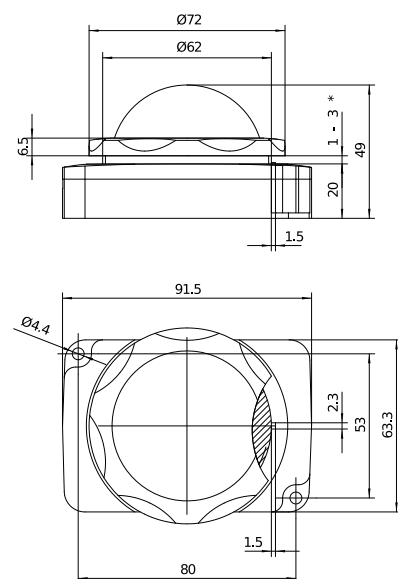
HB PIR 3360 NET Intra, Wire, Zhaga

Sensor technical specifications

	HB PIR 3360 NET Intra	HB PIR 3360 NET Wire	HB PIR 3360 NET Zhaga
Article number	110102846	110102847	110102848
Bluetooth Device Name	STE HB PIR 3360 NET I	STE HB PIR 3360 NET W	STE HB PIR 3360 NET Z
Type	9016	9022	9021
Dimensions	91.5 × 63.3 × 49mm 3D data available online	91.5 × 63.3 × 49mm 3D data available online	91.5 × 63.3 × 57mm 3D data available online
Features	Motion detector Light sensor Feedback indicator Casambi Evolution	Motion detector Light sensor Feedback indicator Casambi Evolution	Motion detector Light sensor Feedback indicator Casambi Evolution
Sensor technology	Passive infrared technology	Passive infrared technology	Passive infrared technology
Light measurement range	4 - 1000lx	4 - 1000lx	4 - 1000lx
Mounting height	2.8 - 14.0m	2.8 - 14.0m	2.8 - 14.0m
Reach, radial	Ø 14m (154m ²)	Ø 14m (154m ²)	Ø 14m (154m ²)
Reach, tangential	Ø 36m (1018m ²)	Ø 36m (1018m ²)	Ø 36m (1018m ²)
Connection	0.34 - 0.75mm ²	Connection strands (0.5mm ² , L=250mm, white)	Zhaga Book 18
Supply voltage / current consumption	12 - 22.5VDC / max. 46mA	12 - 22.5VDC / max. 46mA	12 - 22.5VDC / max. 46mA
IP rating:	IP20 / IP65* * sealed lens	IP65	IP65
Temperatur range	-20 bis +50°C (tc +50°C)	-20 bis +50°C (tc +50°C)	-20 bis +50°C (tc +50°C)
Bluetooth Range	35m	35m	35m
Interfaces	Dali, Casambi	Dali, Casambi	Dali, Casambi
Approval marks / Conformity	CE	CE	CE
Standards	EN 61347-1 EN 61347-2-11 EN 55015 EN 61547 EN 301 489-1	EN 61347-1 EN 61347-2-11 EN 55015 EN 61547 EN 301 489-1	EN 61347-1 EN 61347-2-11 EN 55015 EN 61547 EN 301 489-1

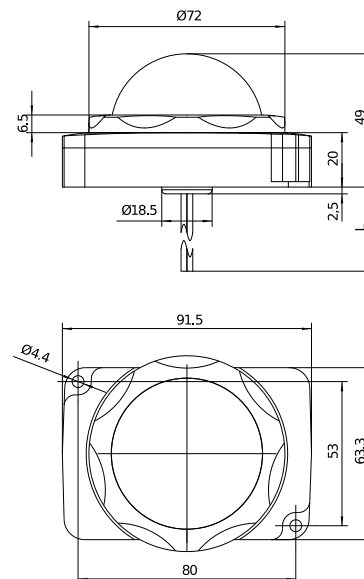
Dimensional drawings

HB PIR 3360 NET Intra

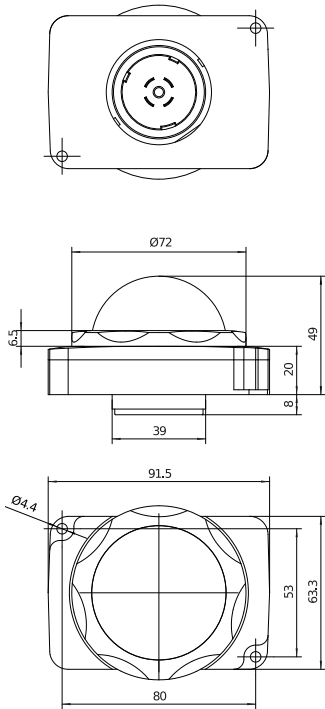


* wall thickness range

HB PIR 3360 NET Wire

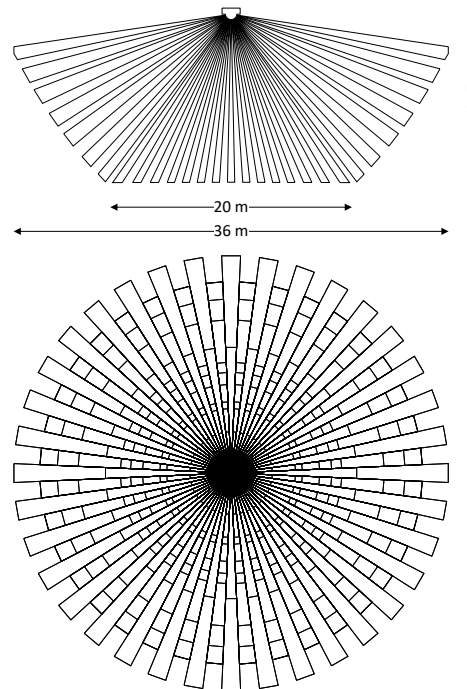
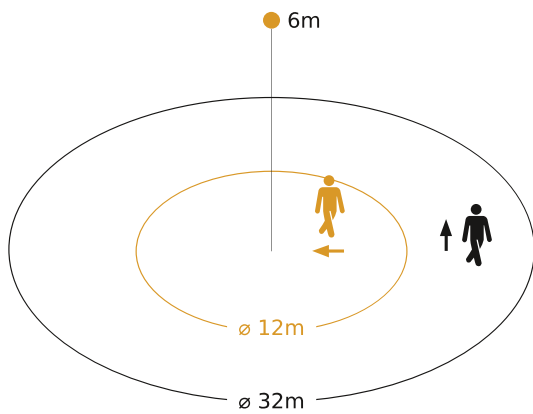


HB PIR 3360 NET Zhaga



Sensor detection zones

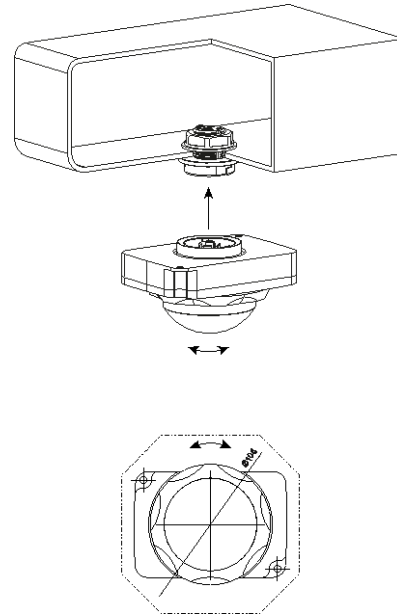
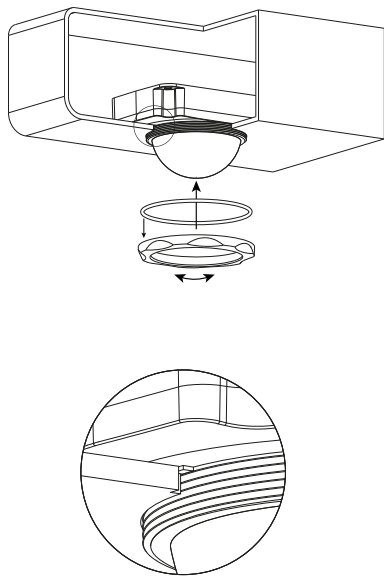
HB PIR 3360 NET



Possible mounting height: 2.8m - 14m
 Orange: radial / Black: tangential

Mounting height	Detection Area (tangential)
14m	Ø 20m
9m	Ø 28m
6m	Ø 32m
2.8m	Ø 36m

Installation advice HB PIR 3360 NET



- Suitable for material thicknesses of 1 - 3mm.
- Hole diameter for lens 62,5 to 63mm.
- Alignment is done by mechanical positioning (see dimensional drawings).

- Clearance of Ø 106mm required for screwing the HB PIR 3360 NET Zhaga onto the Zhaga base.

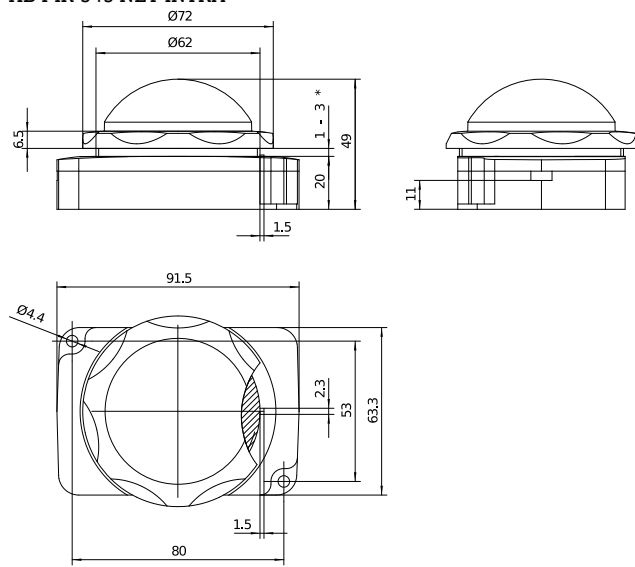
HB PIR 345 NET Intra, Wire, Zhaga

Sensor technical specifications

	HB PIR 345 NET Intra	HB PIR 345 NET Wire	HB PIR 345 NET Zhaga
Article number	110102850	110102851	110102852
Bluetooth Device Name	STE HB PIR 345 NET I	STE HB PIR 345 NET W	STE HB PIR 345 NET Z
Type	9015	9024	9023
Dimensions	91.5 × 63.3 × 49mm 3D data available online	91.5 × 63.3 × 49mm 3D data available online	91.5 × 63.3 × 57mm 3D data available online
Features	Motion detector Light sensor Feedback indicator Casambi Evolution	Motion detector Light sensor Feedback indicator Casambi Evolution	Motion detector Light sensor Feedback indicator Casambi Evolution
Sensor technology	Passive infrared technology	Passive infrared technology	Passive infrared technology
Light measurement range	4 - 1000lx	4 - 1000lx	4 - 1000lx
Mounting height	4.0 - 14.0m	4.0 - 14.0m	4.0 - 14.0m
Reach, radial	30 x 4m (120m ²)	30 x 4m (120m ²)	30 x 4m (120m ²)
Reach, tangential	30 x 4m (120m ²)	30 x 4m (120m ²)	30 x 4m (120m ²)
Connection	0.34 - 0.75mm ²	Connection strands (0.5mm ² , L=250mm, white)	Zhaga Book 18
Supply voltage / current consumption	12 - 22.5VDC / max. 46mA	12 - 22.5VDC / max. 46mA	12 - 22.5VDC / max. 46mA
IP rating:	IP20 / IP65* * sealed lens	IP65	IP65
Temperature range	-20 bis +50°C (tc +50°C)	-20 bis +50°C (tc +50°C)	-20 bis +50°C (tc +50°C)
Bluetooth Range	35m	35m	35m
Interfaces	Dali, Casambi	Dali, Casambi	Dali, Casambi
Approval marks / Conformity	CE	CE	CE
Standards	EN 61347-1 EN 61347-2-11 EN 55015 EN 61547 EN 301 489-1	EN 61347-1 EN 61347-2-11 EN 55015 EN 61547 EN 301 489-1	EN 61347-1 EN 61347-2-11 EN 55015 EN 61547 EN 301 489-1

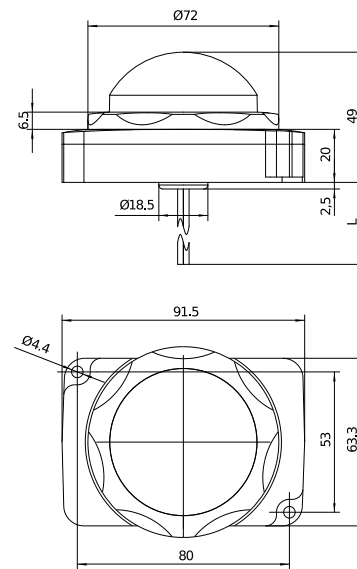
Dimensional drawings

HB PIR 345 NET INTRA

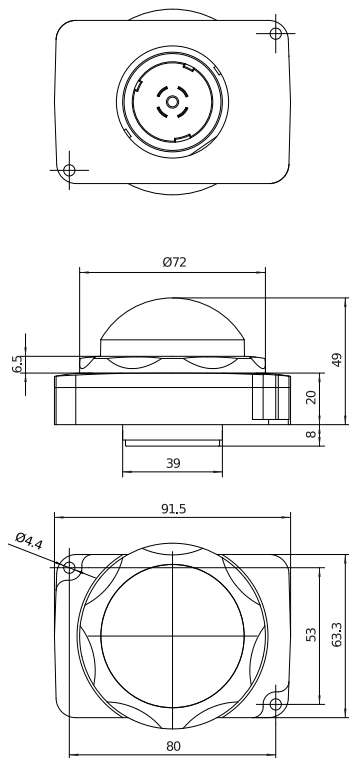


* wall thickness range

HB PIR 345 NET WIRE

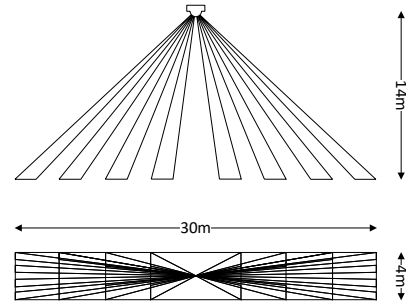
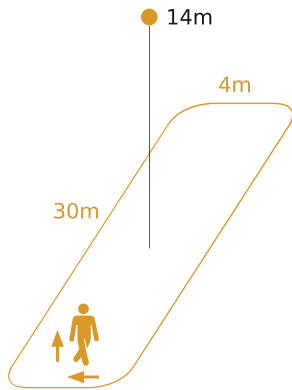


HB PIR 345 NET Zhaga



Sensor detection zones

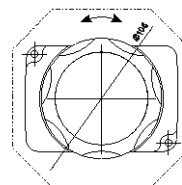
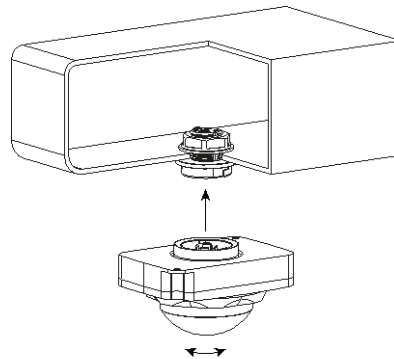
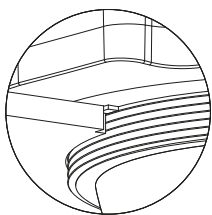
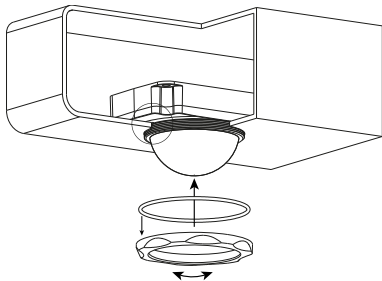
HB PIR 345 NET



Possible mounting height: 4 - 14m
Orange: radial and tangential

Mounting height	Detection Area
14m	30m x 4m
10m	25m x 4m
8m	20m x 4m
6m	15m x 4m
4m	10m x 4m

Installation advice HB PIR 345 NET



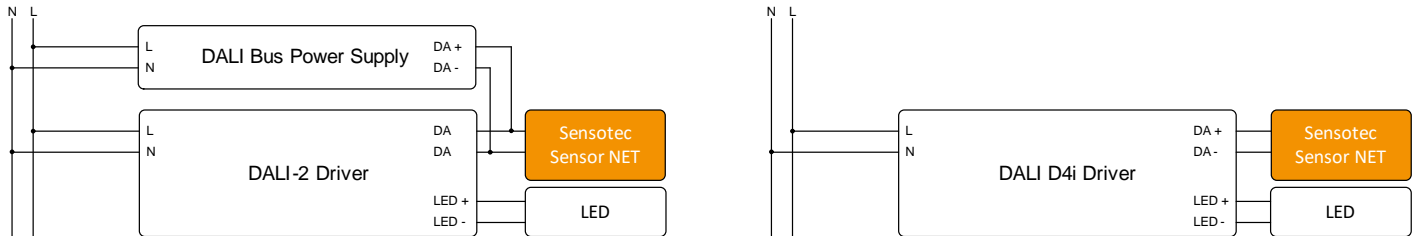
- Suitable for material thicknesses of 1 - 3mm.
- Hole diameter for lens 62,5 to 63mm.
- Alignment is done by mechanical positioning (see dimensional drawings).

- Clearance of $\varnothing 106\text{mm}$ required for screwing the HB PIR 345 NET Zhaga onto the Zhaga base.

General information

Circuit diagram

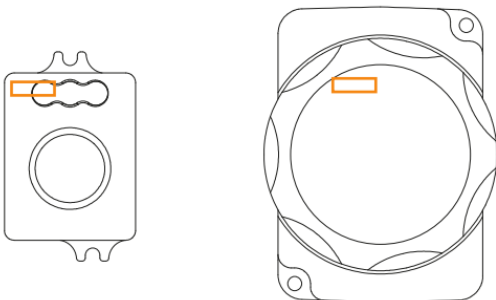
A wiring example with DALI control gear is shown below. If no additional DALI Bus Power Supply is used, the DALI-2 control gear must support at least Part 250 (Integrated bus power supply) and, by way of option, Part 252 (Energy reporting) and Part 253 (Diagnostics & maintenance).



General installation advantages

- Easily clips onto the enclosure (PIR NET)
- Easy to install by means of Zhaga connector system (Zhaga Book 18)
- Easily screws into enclosure
- Connection via a 2-core terminal (except HB Zhaga und Wire)
- Extremely compact size
- The sensor is supplied with power via the two-core DALI bus line
- No plug polarity to observe

Bluetooth antenna locations









Safety precautions


- Electrical devices must only be assembled and installed by qualified electricians.
- Risk of electric shock. Disconnect before attempting work on the unit or load. Take into account all circuit breakers supplying dangerous voltages to the unit or load.
- Risk of electric shock. Before installing the sensor, check the enclosure to make sure it is not damaged. Never open the enclosure.
- The sensor is not suitable for use in burglar alarm systems or other alarm equipment.

Operation and configuration

The sensors are commissioned and configured using the Casambi app:

<p>Casambi App</p> 	<p>Download on the App Store</p>  <p>Link: https://apple.co/3YaLZEn </p>	<p>GET IT ON Google Play</p>  <p>Link: https://bit.ly/4d49KSH </p>
---	--	--

Tutorial videos from Casambi are recommended as an introduction: <https://bit.ly/46ak1L1> 

The Casambi App User Guide will help you with details: <https://bit.ly/467ymb0> 

Additional product information

- The feedback LED indicates the following:
 - Fast blinking: Not commissioned.
 - Slow blinking: Connected to a network.
- The device uses the power supply of the DALI bus, the bus must be able to drive at least 50mA.
- The connected ECG (electronic control gears) are controlled with DAPC (direct arc power control) commands in broadcast mode. All sensors are single master application controller and are intended for use with a DALI-2 control gear.
- The Bluetooth range is dependent on the integration of fixtures, surrounding environment and conditions. It is recommended to conduct testing for range accuracy.
- The ambient light sensor measures the average brightness in a room. When comparing measurements using a lux meter directly below the sensor, deviations can occur.

Conformity / marks of conformity



Note

As attenuation and reflections can cause a high-frequency sensor to behave differently in any luminaire, we cannot accept any liability for the sensor not working as expected in the particular luminaire it is being used in. Accreditation can be provided by STEINEL. Please contact your contact person find out what assistance we can give you in designing the sensor module into a luminaire. The customer must also guarantee and take responsibility for the way in which the other components behave in the luminaire (lamp, ECG etc.).

The product is sold under the brand name STEINEL Solutions AG. Software updates are made available regularly. For your own branding and software update approval process, contact our OEM account manager.

This product data sheet provides no guarantee of qualities within the meaning of the statutory warranty provisions for the product described.